



LINCOLN

THE NEW 2010  
LINCOLN MKZ



Specifications

[lincoln.com](http://lincoln.com)



# THE NEW 2010 LINCOLN MKZ SPECIFICATIONS

## STANDARD LUXURY FEATURES

### Rapid Spec 100A

#### ENGINE

- 3.5L DOHC 24-valve Duratec® aluminum V-6
- 263 hp @ 6250 rpm/249 lb.-ft. of torque @ 4500 rpm
- Intake variable cam timing (iVCT) and Electronic Throttle Control (ETC)
- 10.3:1 compression ratio
- Sequential multi-port electronic fuel injection
- Stainless steel exhaust system with dual chrome exhaust tips

#### DRIVETRAIN

- Front-wheel drive
- 6-speed SelectShift Automatic™ transmission

#### WHEELS | TIRES

- 17" 9-spoke machined-aluminum wheels with painted pockets
- P225/50R17 all-season V-rated performance tires

#### BRAKES

- Anti-lock Brake System (ABS)
- Electronic Brakeforce Distribution (EBD)
- Power 4-wheel disc brakes with ventilated rotors

#### SUSPENSION | STEERING

- 24-mm front and 17-mm rear stabilizer bars
- Independent Short- and Long-Arm front suspension with coil springs over shocks
- Multilink independent rear suspension
- Power rack-and-pinion steering

#### EXTERIOR

- Chrome door handles
- Easy Fuel™ capless fuel-filler system
- Fog lamps with bright bezels
- Light-Emitting Diode (LED) taillamps
- Lincoln split-wing grille
- Power, heated, chrome-capped sideview mirrors with security approach lamps, memory and auto-dimming driver side
- Quad-beam halogen headlamps with Autolamp automatic on/off feature with delay
- Rear-window defroster
- Reverse Sensing System
- Solar-tinted glass
- Speed-sensitive windshield wipers
- Length 190.6"
- Wheelbase 107.4"
- Width (excluding mirrors) 72.2"
- Width (including mirrors) 80.1"
- Height 56.9"

#### INSTRUMENTATION | DRIVER CONTROLS

- Auto-dimming rearview mirror with microphone
- Power windows with global open and one-touch-open/-close for driver and front passenger
- Steering wheel-mounted cruise and secondary audio controls
- Universal Garage Door Opener
- White LED-backlit instrument cluster with speedometer, tachometer, fuel level gauge, coolant temperature gauge and message center

#### INTERIOR

- Accessory timed delay
- Cabin air filtration system
- Dual-zone Electronic Automatic Temperature Control
- Front center floor console with adjustable armrest and two-tiered storage
- Genuine wood accents in Walnut Swirl or Olive Ash on the instrument panel and door trim
- Illuminated entry with theater-dimming feature
- Leather-wrapped shift knob
- Leather-wrapped steering wheel with genuine wood accent in Walnut Swirl or Olive Ash
- Remote, power decklid release
- Tilt/telescoping steering column
- Head room (front/rear) 38.7"/37.8"
- Shoulder room (front/rear) 57.4"/56.5"
- Hip room (front/rear) 54.0"/53.3"
- Leg room (front/rear) 42.3"/37.1"
- Passenger volume 100.3 cu. ft.
- Cargo volume 16.5 cu. ft.
- Total interior volume 116.8 cu. ft.

#### SEATING

- 5-passenger seating
- 10-way power driver seat with power lumbar and memory feature
- 10-way power front-passenger seat with power lumbar and memory feature
- Bridge of Weir leather-trimmed seating
- Heated and cooled driver and front-passenger seats
- 60/40 split-folding rear seat with center armrest and 2 cupholders



## THE NEW 2010 LINCOLN MKZ SPECIFICATIONS

### STANDARD LUXURY FEATURES (cont.)

#### AUDIO | COMMUNICATION SYSTEMS

Premium AM/FM audio system with 6-disc in-dash CD changer, MP3 capability, and 9 speakers

Auxiliary audio input jack in front center floor console

Lincoln SYNC® voice-activated, in-vehicle communications and entertainment system

SIRIUS® Satellite Radio, including SIRIUS Satellite Radio receiver, low-profile antenna, and 6-month complimentary subscription to SIRIUS

#### SAFETY | SECURITY

Personal Safety System™ for driver and front passenger with dual-stage front airbags,<sup>1</sup> safety belt pretensioners, safety belt energy-management retractors, safety belt usage sensors, crash severity sensor, restraint control module and Front-Passenger Sensing System

AdvanceTrac® electronic stability control with Brake-Actuated Traction Control

Belt-Minder® front safety belt reminder

Child-safety rear door locks

Emergency glow-in-the-dark, in-trunk release handle

Front-seat side airbags<sup>1</sup>

Integrated keyhead transmitter remotes (2)

Lower anchors and tether anchors for child-safety seats (LATCH)

Perimeter anti-theft system

Power door locks

SecuriCode™ keyless-entry keypad

SecuriLock® passive anti-theft ignition system

Side-curtain airbags<sup>1</sup> with roll-fold technology

Side-intrusion door beams

SOS Post-Crash Alert System™

Tire Pressure Monitoring System (excludes spare)

### AVAILABLE LUXURY PACKAGES

#### INTERIOR ALUMINUM TRIM PACKAGE

- Aluminum trim on the instrument panel and front and rear doors; with leather-wrapped steering wheel

#### NAVIGATION PACKAGE – Rapid Spec 102A

- Voice-activated, hard drive-based Navigation System with 8" high-resolution display; integrated SIRIUS Travel Link™ feature (with 6-month complimentary subscription to Travel Link service) for real-time traffic, weather and fuel price updates; driver-configurable home screen; and about 10 gigabytes of digital storage for pictures and music; includes premium AM/FM audio system with single-CD player, MP3 capability and 9 speakers
- BLIS® (Blind Spot Information System) with Cross Traffic Alert
- Rear View Camera

#### SPORT APPEARANCE PACKAGE

- Bridge of Weir Dark Charcoal or Steel Grey leather-trimmed seats with Cashmere-colored tuxedo seam and piping
- Sport-tuned suspension
- Interior Aluminum Trim Package
- Unique floor mats with MKZ badge
- Unique chrome grille with black bars
- 18" 10-spoke polished-aluminum wheels
- Darkened headlamps
- Body-color door handles

#### TECHNOLOGY PACKAGE – Rapid Spec 101A

- Adaptive HID headlamps
- Ambient Lighting
- Rain-sensing windshield wipers

#### ULTIMATE PACKAGE – Rapid Spec 103A

- Navigation Package
- Technology Package
- THX® II Certified 5.1 Surround Audio System
- Power moonroof
- 17" 9-spoke chrome-clad aluminum wheels

### AVAILABLE EQUIPMENT

- 17" 9-spoke chrome-clad aluminum wheels<sup>2</sup>
- Intelligent All-Wheel Drive (AWD)
- Power moonroof
- THX II Certified Audio System with AM/FM stereo/6-disc in-dash CD changer, MP3 capability, 14 speakers (including two 6" x 9" subwoofers), 600 watts of power and 12-channel amplifier (requires Technology Package)
- THX II Certified 5.1 Surround Audio System with AM/FM stereo/single-CD/DVD/Jukebox, MP3 capability, 14 speakers (including two 6" x 9" subwoofers), 600 watts of power and 12-channel amplifier (requires Navigation Package)

### AVAILABLE CUSTOM ACCESSORIES

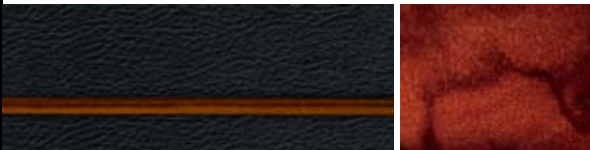
- Dual INViSiON™ DVD Headrests<sup>3</sup>
- Blaupunkt® amplifier/subwoofer<sup>3</sup>
- Garmin® nüvi® Portable Navigation System<sup>3</sup>
- Katzkin® Leather seat covers<sup>3</sup>
- Wiper Shaker<sup>3</sup>
- HD Radio<sup>®3</sup>
- Skyway SmartAlert™<sup>3</sup>
- Remote start systems
- Vehicle security system
- Ashcup/coin holder/Smoker's Pack
- 18" polished-aluminum wheels
- Splash guards<sup>3</sup>
- Cargo management systems
- Standard or large soft cargo organizer<sup>4</sup>
- Interior cargo area protector
- Soft-sided cooler
- Interior cargo net
- Premium carpeted floor mats
- All-weather floor mats
- Wheel locks
- Side window deflectors
- Moonroof deflector

To learn more about Lincoln Accessories and to buy them online, visit [lincolnaccessories.com](http://lincolnaccessories.com).

<sup>1</sup>Always wear your safety belt and secure children in the rear seat. <sup>2</sup>Not available with Sport Appearance Package. Requires Technology Package or Navigation Package. <sup>3</sup>Lincoln Licensed Accessories. <sup>4</sup>Late availability.



Dark Charcoal Leather trim is available with all exterior colors



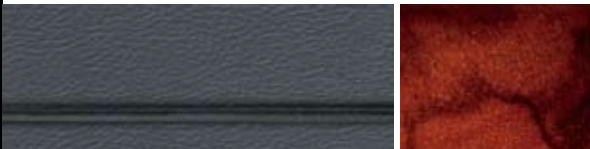
DARK CHARCOAL LEATHER WITH DARK RUST PIPING | WALNUT SWIRL WOOD

Light Camel Leather trim is available with:  
Sangria Red  
Smokestone  
Tuxedo Black  
Sterling Grey  
Atlantis Green  
White Platinum Tri-Coat



LIGHT CAMEL LEATHER WITH AGATE PIPING | OLIVE ASH WOOD

Steel Grey Leather trim is available with:  
Tuxedo Black  
Sterling Grey  
Brilliant Silver  
White Platinum Tri-Coat



STEEL GREY LEATHER WITH STERLING PIPING | WALNUT SWIRL WOOD

Dark Charcoal Leather trim is available with all exterior colors

Steel Grey Leather trim is available with:  
Tuxedo Black  
Sterling Grey  
Brilliant Silver  
White Platinum Tri-Coat



DARK CHARCOAL OR STEEL GREY LEATHER WITH PIPING | ALUMINUM TRIM

Sport Appearance Package is offered with:  
Sangria Red  
Tuxedo Black  
Sterling Grey  
Brilliant Silver  
White Platinum Tri-Coat



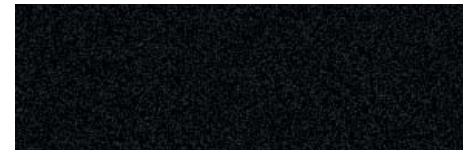
DARK CHARCOAL OR STEEL GREY LEATHER WITH CASHMERE-COLORED PIPING AND TUXEDO SEAM | ALUMINUM TRIM



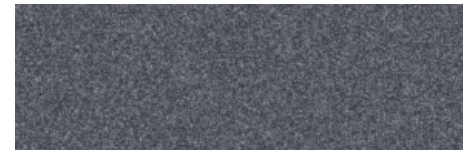
SANGRIA RED METALLIC



SMOKESTONE METALLIC



TUXEDO BLACK METALLIC



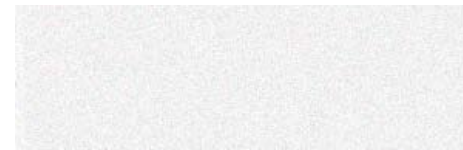
STERLING GREY METALLIC



ATLANTIS GREEN METALLIC



BRILLIANT SILVER METALLIC



WHITE PLATINUM METALLIC TRI-COAT<sup>1</sup>

Lincoln uses clearcoat paint for beauty and protection. Colors are representative only.

<sup>1</sup>Additional cost.

WHEELS



Top to bottom:

17" 9-SPOKE CHROME-CLAD ALUMINUM | OPTIONAL

17" 9-SPOKE MACHINED-ALUMINUM WITH PAINTED POCKETS | STANDARD

18" 10-SPOKE POLISHED-ALUMINUM | SPORT APPEARANCE PACKAGE

**FORD CREDIT** Get the ride you want. Whether you plan to lease or finance, you'll find the choices that are right for you at Ford Credit. Ask your Lincoln Mercury Dealer for details or check us out at [fordcredit.com](http://fordcredit.com).

**FORD MOTOR COMPANY INSURANCE SERVICES** Get Ford Motor Company quality in your auto insurance. Our program offers industry-leading benefits and competitive rates. Call 1.877.367.3847, or visit us at [fordvip.com](http://fordvip.com) for a no-obligation quote. Insurance offered by American Road Services Company (in CA, American Road Insurance Agency), a licensed agency and subsidiary of Ford Motor Company.

**FORD EXTENDED SERVICE PLAN** For a purchase or lease, the Ford Extended Service Plan (ESP) gives you "Peace-of-Mind" protection designed to cover key vehicle components and protect you from the cost of unexpected repairs. Ask your dealer for an ESP, the only service contract backed exclusively by Ford and honored at all Ford Lincoln Mercury dealerships.

Complimentary maintenance makes driving your Lincoln even more of a pleasure. Simply bring it to an authorized Lincoln service center, and scheduled maintenance will be performed at no charge throughout your first year of ownership or 15,000 miles, whichever comes first. Additional peace of mind comes from a 4-year/50,000-mile bumper-to-bumper New Vehicle Limited Warranty that covers repair, replacement or adjustment of parts at no additional cost, as well as a 6-year/70,000-mile powertrain limited warranty which features no deductible and is fully transferable. And Roadside Assistance for 6 years or 70,000 miles provides the security of knowing that help may be only a phone call away should you run out of fuel, lock yourself out of the vehicle or need towing. Your Lincoln Mercury Dealer will provide complete details on all of these privileges.

"SIRIUS," the SIRIUS dog logo, "SIRIUS Travel Link" and related marks are trademarks of SIRIUS Satellite Radio Inc.

THX, the THX logo and THX Slot Speaker are trademarks of THX Ltd., which may be registered in some jurisdictions. All rights reserved.

Garmin is a registered trademark of Garmin Ltd.

Comparisons based on 2009 competitive models (Luxury Midsize Sedan class), publicly available information and Ford certification data at time of release. Some features discussed may be optional. Vehicles shown may contain optional equipment. Features shown may be offered only in combination with other options or subject to additional ordering requirements or limitations. Dimensions shown may vary due to optional features and/or production variability. Following release of this PDF, certain changes in standard equipment, options and the like, or product delays may have occurred which would not be included in these pages. Your Lincoln Mercury Dealer is the best source of up-to-date information. Lincoln Mercury reserves the right to change product specifications at any time without incurring obligations.

©2009 Lincoln Mercury, Ford Motor Company

10LMKZWEBPDFSPEC