



LINCOLN

2010
LINCOLN MKX





STANDARD LUXURY FEATURES

Rapid Spec 100A:

ENGINE

3.5L DOHC 24-valve Duratec® aluminum V-6
 265 hp @ 6250 rpm/250 lb.-ft. of torque @ 4500 rpm
 Intake variable cam timing (iVCT) and sequential multi-port fuel injection
 Stainless steel exhaust system with dual chrome exhaust tips
 2010 EPA-estimated fuel economy
 FWD 18 mpg city/25 hwy. (19-gal. capacity)
 AWD 17 mpg city/23 hwy. (20-gal. capacity)

DRIVETRAIN

Front-wheel drive
 6-speed automatic transmission

WHEELS | TIRES

18" 8-spoke machined-aluminum wheels with Euroflange
 P245/60R18 all-season BSW tires

BRAKES

Power 4-wheel disc brakes with Anti-lock Brake System (ABS)

SUSPENSION | STEERING

Front and rear stabilizer bars
 Front independent suspension with MacPherson struts and L-shaped lower control arms with isolated subframe
 Rear 4-link independent suspension with trailing blades, integrated knuckle and lateral links, and isolated subframe
 Power rack-and-pinion steering

EXTERIOR

Black-painted spoiler
 Chrome door handles and beltline molding
 Fog lamps with chrome bezel surrounds
 Full-width rear LED lighting panel
 Power, heated, chrome-capped sideview mirrors with integrated Blind Spot Mirrors, security approach lamps, memory and auto-dimming driver side
 Power liftgate
 Quad-beam halogen headlamps with autolamp feature and wiper activation
 Reverse Sensing System

Length	186.5"
Wheelbase	111.2"
Width (including sideview mirrors)	87.5"
Width (sideview mirrors folded)	79.1"
Height (without options)	67.3"

INSTRUMENTATION | DRIVER CONTROLS

Auto-dimming rearview mirror
 Instrument cluster with electro-fluorescent lighting
 Leather-wrapped shift knob and steering wheel (with cruise control and secondary audio controls)
 Power windows with global open and one-touch-open/-close for driver and front passenger
 Tilt/telescoping steering column
 Universal Garage Door Opener

INTERIOR

Bright-nickel accents on steering wheel, center console and door-trim panels
 Chrome door handles
 Dual-zone Electronic Automatic Temperature Control
 Front center floor console with shifter, armrest and 2 cupholders
 Genuine wood accents on the instrument panel, door-trim panels and steering wheel
 Overhead console with front-seat map lighting and sunglasses storage
 Power points (4)
 Rear cargo hooks and net

Head room (front/rear)	40.0"/39.3"
Shoulder room (front/rear)	58.9"/58.8"
Leg room (front/rear)	40.7"/39.6"
Cargo volume (behind front/rear seats)	68.6 cu. ft./32.3 cu. ft.

SEATING

Leather-trimmed, heated and cooled front seats with 10-way power, including lumbar support, driver-side memory and easy-entry features
 Leather-trimmed, 60/40 split-folding, reclining rear seats with 2-way outboard head restraints and fold-forward center armrest with head restraint

AUDIO | COMMUNICATION SYSTEMS

Premium AM/FM audio system with 6-disc in-dash CD changer, MP3 capability and 6 speakers
 Auxiliary audio input jack in front center floor console
 Lincoln SYNC® voice-activated communications and entertainment system
 SIRIUS Satellite Radio, including SIRIUS Satellite Radio receiver and 6-month complimentary subscription to SIRIUS



LINCOLN

2010 LINCOLN MKX

SPECIFICATIONS

STANDARD LUXURY FEATURES (cont.)

SAFETY | SECURITY

Personal Safety System™ for driver and front passenger with dual-stage front airbags,¹ safety belt pretensioners, safety belt energy-management retractors, safety belt usage sensors, driver-seat position sensor, crash severity sensor, restraint control module and Front-Passenger Sensing System

AdvanceTrac® with RSC® (Roll Stability Control™)

Belt-Minder® front safety belt reminder

Front-seat side airbags¹

Lower anchors and tether anchors for child-safety seats (LATCH)

Perimeter anti-theft system

Remote keyless-entry system with 2 integrated keyhead transmitter remotes

Safety Canopy® System with side-curtain airbags¹ for front and rear outboard passengers, and rollover sensor

SecuriCode™ keyless-entry keypad

SecuriLock® passive anti-theft ignition system

Side-intrusion door beams

SOS Post-Crash Alert System™

Tire Pressure Monitoring System (excludes spare)

AVAILABLE LUXURY PACKAGES

Rapid Spec 101A:

ULTIMATE PACKAGE

- 18" 10-spoke polished-aluminum wheels
- Premium leather-trimmed seats with contrast piping
- Embroidered Lincoln Star on front-row head restraints
- Adaptive headlamps
- Ambient Lighting
- EasyFold™ rear seat release
- Below-floor Cargo Management System

Rapid Spec 102A:

ULTIMATE PACKAGE CONTENT AND ELITE PACKAGE

- Panoramic, all-glass Vista Roof™ with dual power sunshades
- Voice-activated Navigation System with 6.5" high-resolution display; integrated SIRIUS Travel Link™ feature (with 6-month complimentary subscription to Travel Link service) for real-time traffic, weather and fuel price updates; driver-configurable home screen; plus hard drive for music and data storage
- THX® II Certified 5.1 Surround Audio System with AM/FM stereo/single-CD/DVD/Jukebox, MP3 capability, 14 speakers (including 8" subwoofer), 600 watts of power and 12-channel amplifier

MIDNIGHT LIMITED EDITION PACKAGE^{2,3,4}

- Monochromatic Black grille
- Etched Lincoln Star in headlamp lenses
- 22" 10-spoke bright polished-aluminum wheels
- Sport-tuned suspension
- LIMITED EDITION badge
- Ebony Interior Package
- Premium carpeted floor mats with embroidered MKX logo
- Available exclusively in Tuxedo Black Metallic

LIMITED EDITION PACKAGE^{2,5}

- Chrome grille
- Etched Lincoln Star in headlamp lenses
- 20" 7-spoke chrome-clad aluminum wheels
- LIMITED EDITION badge
- Premium Cashmere-colored leather-trimmed seats with Charcoal Black piping and embroidered Lincoln Star on front-row head restraints
- Ebony wood accents
- Ebony carpeting and premium carpeted floor mats with embroidered MKX logo

MONOCHROME LIMITED EDITION PACKAGE^{2,6}

Includes everything listed in the Limited Edition Package, plus:

- Monochromatic Black grille
- Available exclusively in Tuxedo Black Metallic

¹Always wear your safety belt and secure children in the rear seat. ²Requires Rapid Spec 101A or 102A. ³Not available with Limited Edition or Monochrome Limited Edition Package. ⁴Not compatible with Class II Trailer Tow Package. ⁵Not available with Monochrome Limited Edition or Ebony Interior Package. ⁶Not available with Limited Edition or Ebony Interior Package.



AVAILABLE LUXURY PACKAGES (cont.)

EBONY INTERIOR PACKAGE^{1,2}

- Premium Charcoal Black leather-trimmed seats with Charcoal Black piping, embroidered Lincoln Star on front-row head restraints and Ebony wood accents

CLASS II TRAILER TOW PACKAGE (3500-lb. max. towing capacity)

- Class II hitch receiver
- Wiring harness with 4-pin connector
- Upgraded cooling fans and larger radiator

AVAILABLE EQUIPMENT

- 20" 7-spoke chrome-clad aluminum wheels¹
- All-weather Black floor mats (in addition to standard mats)
- Panoramic, all-glass Vista Roof™ with dual power sunshades
- Intelligent All-Wheel Drive (AWD)
- Heated rear seats¹
- Voice-activated Navigation System (described in Elite Package), includes THX II® Certified 5.1 Surround Audio System with AM/FM stereo/single-CD/DVD/Jukebox, MP3 capability, 14 speakers (including 8" subwoofer), 600 watts of power and 12-channel amplifier¹
- THX II Certified Audio System with AM/FM stereo/6-disc in-dash CD changer with MP3 capability, 14 speakers (including 8" subwoofer), 600 watts of power and 12-channel amplifier¹
- Roof-rack side rails in Black³

AVAILABLE LINCOLN CUSTOM ACCESSORIES

- Dual INVISON™ DVD Headrests⁴
- 20" chrome wheel⁴
- Garmin® portable navigation systems⁴
- Katzkin® leather seat covers⁴
- Front illuminated sill plates
- SmartAlert™ GPS tracking and recovery⁴
- Remote start systems
- Vehicle security system
- THULE® racks, carriers and cargo holders^{4,5}
- Privacy shade
- Cargo-Logic® System
- Body Kit by 3dCarbon®⁴
- Splash guards
- Interior soft cargo organizers (large and standard)
- Interior cargo area protector
- Interior soft cargo cooler bag
- All-weather floor mats
- Wheel locks
- Side window deflectors
- Trailer wiring harness
- Bumper protector
- Roof rails
- Roof crossbars
- Wiper Shaker de-icer and debris cleaner⁴
- Ashcup/coin holder/Smoker's Pack
- Trailer hitch balls/draw bars
- Trailer hitch



To learn more about Lincoln Custom Accessories and to buy them online, visit lincolnaccessories.com.

¹Requires Rapid Spec 101A or 102A. ²Not available with Limited Edition or Monochrome Limited Edition Package. ³Not available with Vista Roof or Rapid Spec 102A. ⁴Lincoln Licensed Accessories. ⁵Only available for vehicles with roof-rack side rails.



MKX | TRIM

Available with:
Steel Blue
Tuxedo Black
Sterling Grey
Cinnamon
Ingot Silver
Red Candy
White Platinum Tri-Coat



CHARCOAL BLACK LEATHER | FIGURED MAPLE WOOD

Available with:
Gold Leaf
Steel Blue
Tuxedo Black
Sterling Grey
Cinnamon
Ingot Silver
Red Candy
White Platinum Tri-Coat



LIGHT CAMEL LEATHER | EBONY WOOD

Ultimate Package is offered with:
Steel Blue
Tuxedo Black
Sterling Grey
Cinnamon
Ingot Silver
Red Candy
White Platinum Tri-Coat



CHARCOAL BLACK PREMIUM LEATHER WITH CHAMOIS PIPING | FIGURED MAPLE WOOD

Ultimate Package is offered with:
Gold Leaf
Steel Blue
Tuxedo Black
Cinnamon
Red Candy
White Platinum Tri-Coat



LIGHT CAMEL PREMIUM LEATHER WITH GREYSTONE PIPING | EBONY WOOD

Ultimate Package is offered with:
Gold Leaf
Tuxedo Black
Sterling Grey
Ingot Silver
Red Candy
White Platinum Tri-Coat



MEDIUM LIGHT STONE PREMIUM LEATHER WITH CHARCOAL BLACK PIPING | EBONY WOOD

Limited Edition Package is offered with:
Tuxedo Black
Ingot Silver
Red Candy
White Platinum Tri-Coat



CASHMERE-COLORED PREMIUM LEATHER WITH CHARCOAL BLACK PIPING | EBONY WOOD

Ebony Interior Package is offered with:
Steel Blue
Tuxedo Black
Sterling Grey
Cinnamon
Ingot Silver
Red Candy
White Platinum Tri-Coat



CHARCOAL BLACK PREMIUM LEATHER WITH CHARCOAL BLACK PIPING | EBONY WOOD

Midnight Limited Edition Package is offered with:
Tuxedo Black



LINCOLN

2010 LINCOLN MKX

MKX | COLOR



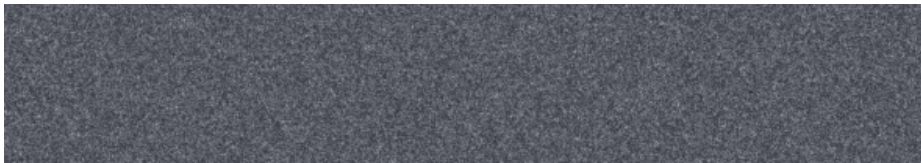
GOLD LEAF METALLIC



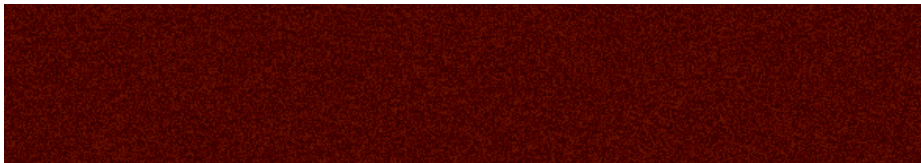
STEEL BLUE METALLIC



TUXEDO BLACK METALLIC



STERLING GREY METALLIC



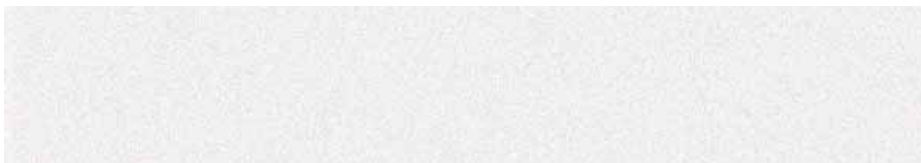
CINNAMON METALLIC



INGOT SILVER METALLIC



RED CANDY METALLIC WITH TINTED CLEARCOAT¹



WHITE PLATINUM METALLIC TRI-COAT¹

Colors are representative only.

¹Additional cost.



WHEELS



- Top to bottom:
22" 10-SPOKE BRIGHT POLISHED-ALUMINUM | MIDNIGHT LIMITED EDITION PACKAGE
- 20" 7-SPOKE CHROME-CLAD ALUMINUM | AVAILABLE
- 18" 8-SPOKE MACHINED-ALUMINUM WITH EUROFLANGE | STANDARD
- 18" 10-SPOKE POLISHED-ALUMINUM | ULTIMATE PACKAGE

FORD CREDIT Get the ride you want. Whether you plan to lease or finance, you'll find the choices that are right for you at Ford Credit. Ask your Lincoln Mercury Dealer for details or check us out at fordcredit.com.

FORD MOTOR COMPANY INSURANCE SERVICES Get Ford Motor Company quality in your auto insurance. Our program offers industry-leading benefits and competitive rates. Call 1.877.367.3847, or visit us at fordvip.com for a no-obligation quote. Insurance offered by American Road Services Company (in CA, American Road Insurance Agency), a licensed agency and subsidiary of Ford Motor Company.

FORD EXTENDED SERVICE PLAN For a purchase or lease, the Ford Extended Service Plan (ESP) gives you "Peace-of-Mind" protection designed to cover key vehicle components and protect you from the cost of unexpected repairs. Ask your dealer for an ESP, the only service contract backed exclusively by Ford and honored at all Ford Lincoln Mercury dealerships.

Genuine Lincoln Accessories will be warranted for whichever provides you the greatest benefit: 12 months or 12,000 miles (whichever occurs first), or the remainder of your Bumper-to-Bumper 4-year/50,000-mile New Vehicle Limited Warranty. Contact your local Lincoln Mercury Dealer for details and a copy of the limited warranty. Lincoln Licensed Accessories (LLA) are warranted by the accessory manufacturer's warranty. Contact your Lincoln Mercury Dealer for details regarding the manufacturer's limited warranty and/or a copy of the LLA product limited warranty offered by the accessory manufacturer.

Complimentary maintenance makes driving your Lincoln even more of a pleasure. Simply bring it to an authorized Lincoln service center, and scheduled maintenance will be performed at no charge throughout your first year of ownership or 15,000 miles, whichever comes first. Additional peace of mind comes from a 4-year/50,000-mile bumper-to-bumper New Vehicle Limited Warranty that covers repair, replacement or

adjustment of parts at no additional cost, as well as a 6-year/70,000-mile powertrain limited warranty which features no deductible and is fully transferable. And Roadside Assistance for 6 years or 70,000 miles provides the security of knowing that help may be only a phone call away should you run out of fuel, lock yourself out of the vehicle or need towing. Your Lincoln Mercury Dealer will provide complete details on all of these privileges.

SIRIUS is a registered trademark of SIRIUS XM Radio Inc. Subscriptions governed by SIRIUS Terms and Conditions at sirius.com/serviceterms.

THX, the THX logo and THX Slot Speaker are trademarks of THX Ltd., which may be registered in some jurisdictions. All rights reserved.

Garmin is a registered trademark of Garmin Ltd.

Comparisons based on 2009 competitive models (Luxury Midsize 5-Passenger Crossover class), publicly available information and Ford certification data at time of release. Some features discussed may be optional. Vehicles shown may contain optional equipment. Features shown may be offered only in combination with other options or subject to additional ordering requirements or limitations. Dimensions shown may vary due to optional features and/or production variability. Following release of this PDF, certain changes in standard equipment, options and the like, or product delays may have occurred which would not be included in these pages. Your Lincoln Mercury Dealer is the best source of up-to-date information. Lincoln Mercury reserves the right to change product specifications at any time without incurring obligations.